

Joaquin Castillejos Organizing Coordinator Center for Community Action and Environmental Justice



Contact: joaquin.c@ccaenj.org

Tongva and Serrano Land

Stopping the Industrialization of
our Communities

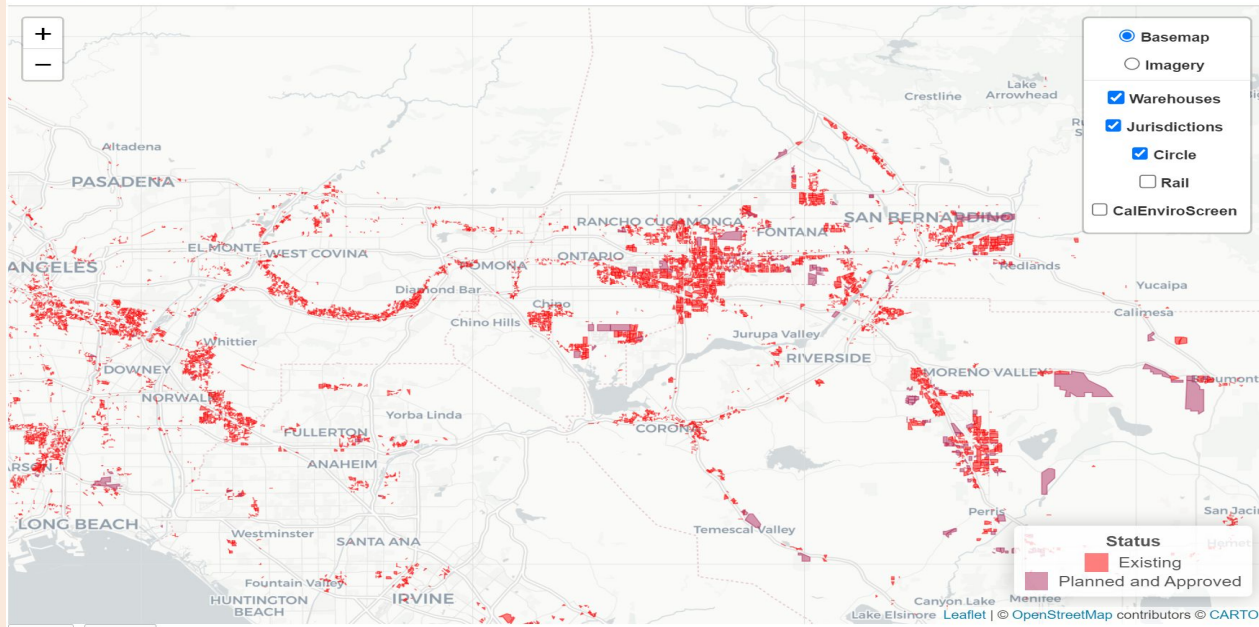


Goods Movement in the IE

State of the Logistics Industry in the IE



Category	Warehouse count	Acreage	Warehouse floor space (Sq.Ft.)	Daily Truck trips	Daily Diesel PM (pounds)	Daily NOx (pounds)	Daily CO2 (metric tons)	Jobs
Planned and Approved	298	14,887	356,700,000	239,000	330.6	37,236	10051.6	119,096
Existing	9,749	59,577	1,427,300,000	956,000	1322.3	148,945	40206.5	476,616



Goods Movement in the IE (cont'd)

An estimated 40% of the nation's consumer goods come through the region, [Bloomberg News reported](#), and [the logistics industry employed almost 1 in 8 Inland workers as of early 2021](#).



Ozone	Particle Pollution	
	24-Hour	Annual
F	F	Fail

The **American Lung Association** ranked the Inland Valley an F on all categories. Last year San Bernardino and Riverside Counties was ranked **#1 and #2** respectively on **worst counties in the US for ozone pollution** by ALA using EPA data.



Using your voice

- In 2021, Fontana City Council approved a warehouse right next to a high school despite overwhelming opposition from the community including a grassroots group called South Fontana Concerned Citizens Coalition (SFCCC)
- Despite the loss, the public outcry during the meeting and community comments prompted CA's attorney general to file a lawsuit against the city resulting in a "sustainability" ordinance to address impacts from warehouse development.
- Although not the best outcome when another project next to the school was proposed again the city denied it.



LOCAL NEWS • News

State sues Fontana to block sprawling warehouse project in low-income area

'Fontana residents shouldn't have to choose between economic development and clean air. They deserve both,' says Attorney General Rob Bonta



LOCAL NEWS • News

Fontana rejects plan to build 3 warehouses next to Jurupa Hills High School

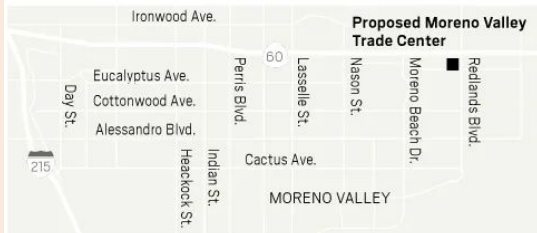
Zoned for 507 residential units, the project site also abuts Fontana Adult School and Citrus High School to the east



More examples:

Warehouse rejected

The Moreno Valley Trade Center, a proposed 1,263,271-square-foot warehouse, was rejected Tuesday by the Moreno Valley City Council.



Source: City of Moreno Valley

SCNG

A giant warehouse project was denied by the Moreno Valley City Council on Tuesday night, April 18 — 16 months after the council first postponed a decision on it.

The vote was 4-1, with Mayor Ulises Cabrera, Mayor Pro Tem Ed Delgado and Councilmembers David Marquez and Cheylynda Barnard voting against the project. Councilmember Elena Baca-Santa Cruz was in favor. The council was voting on the developer's appeal of a city planning commission vote to reject the warehouse. Four votes sided with the panel's conclusion; one disagreed with it.

HUDSON, N.H. — Amazon has pulled out of a major development project in Hudson, saying it has reassessed its business needs.

"It's really, really exciting news," Churchill resident Cathy Bordner said of Amazon's decision to halt the warehouse project. "I don't think any of us expected it," she said. So when she and other opponents of the development learned Thursday evening that it would not go forward, she said, "We just didn't believe it."

Bordner helped to organize the group Churchill Future, which resisted the Amazon facility for months and weighed in at a series of public hearings that spanned 57 hours.

Critics had argued that the facility would not have fit in with the surrounding residential neighborhood. They worried that the 2.6 million-square-foot warehouse, which would have operated 24/7, would increase air pollution, traffic, light and noise in the area.



Leveraging Relationships with Public/Elected Officials and the Press

Lobbying, toxic tours, community events/town halls, etc work to keep those making decision accountable to the community and making sure they are choosing people over profit.



Toxic Tour with Rep Adam Schiff



At the capitol advocating for a warehouse buffer bill authored by CA Assemblymember Eloise Gomez Reyes.



Toxic Tour with San Bernardino County Supervisor Dawn Rowe



Leveraging Relationships with Public/Elected Officials



Warehouse Indirect Source Rule passes in 2021 holding warehouses greater than 100,000 square feet accountable to directly reduce nitrogen oxide (NO_x) and diesel particulate matter (PM) emissions, or to otherwise reduce emissions and exposure of these pollutants in nearby communities. This measure was passed through lobbying and community support.



California approves Advanced Clean Truck Rule setting goal to requiring all sales of new trucks to be zero-emission by 2040.



Voting for Our Futures

Our city, county, and state officials are at the steering wheel dictating where we are going, how our cities develop, and how industries are regulated.

But in a democracy the structure should be more like an Uber and it should be the passengers (community) having the most influence on where we are going in.



EJ Scorecards ranks bills and legislators on their effectiveness in pushing environmental legislation.



County Supervisor Townhall



What is the key to this movement?

Community!!!!

Frontline and fenceline communities should be at the center of environmental justice.



Questions?; Preguntas

